

Basic set for 3-hole basin mixer for concealed installation wall-mounted
 Surfaces: n.a. Article Number: 10303180



Description

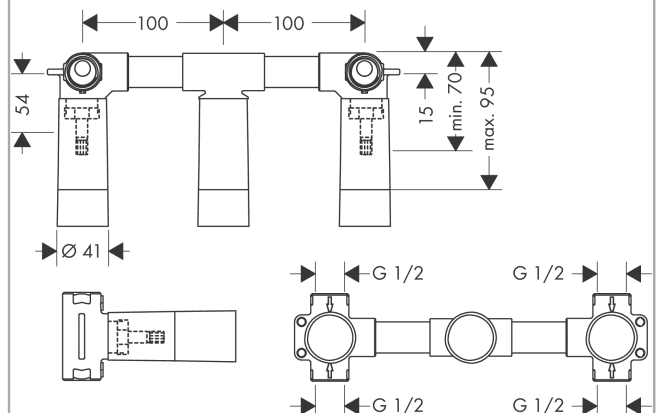
product features

- suitable for all 3-hole wash basin mixers for wall mounting
- connection from above or below
- connection dimension: DN15/DN20
- SVGW 1001-5666
- SVGW 1001-5666
- DVGW NW-6501BT0602
- ETA VA 1.42/19070
- ACS 18 ACC LY 853, valide jusqu'au 07.01.2024
- WRAS 1502006
- SINTEF 1425
- NSF Declaration 170321
- Reg 4 170649
- REG 4 170734
- STA 1420
- WELS SGP 2 Ticks BST-2020/028963/SLS
- WELS SGP 3 Ticks BST-2019/028725/SLS

Product image



Scale drawing

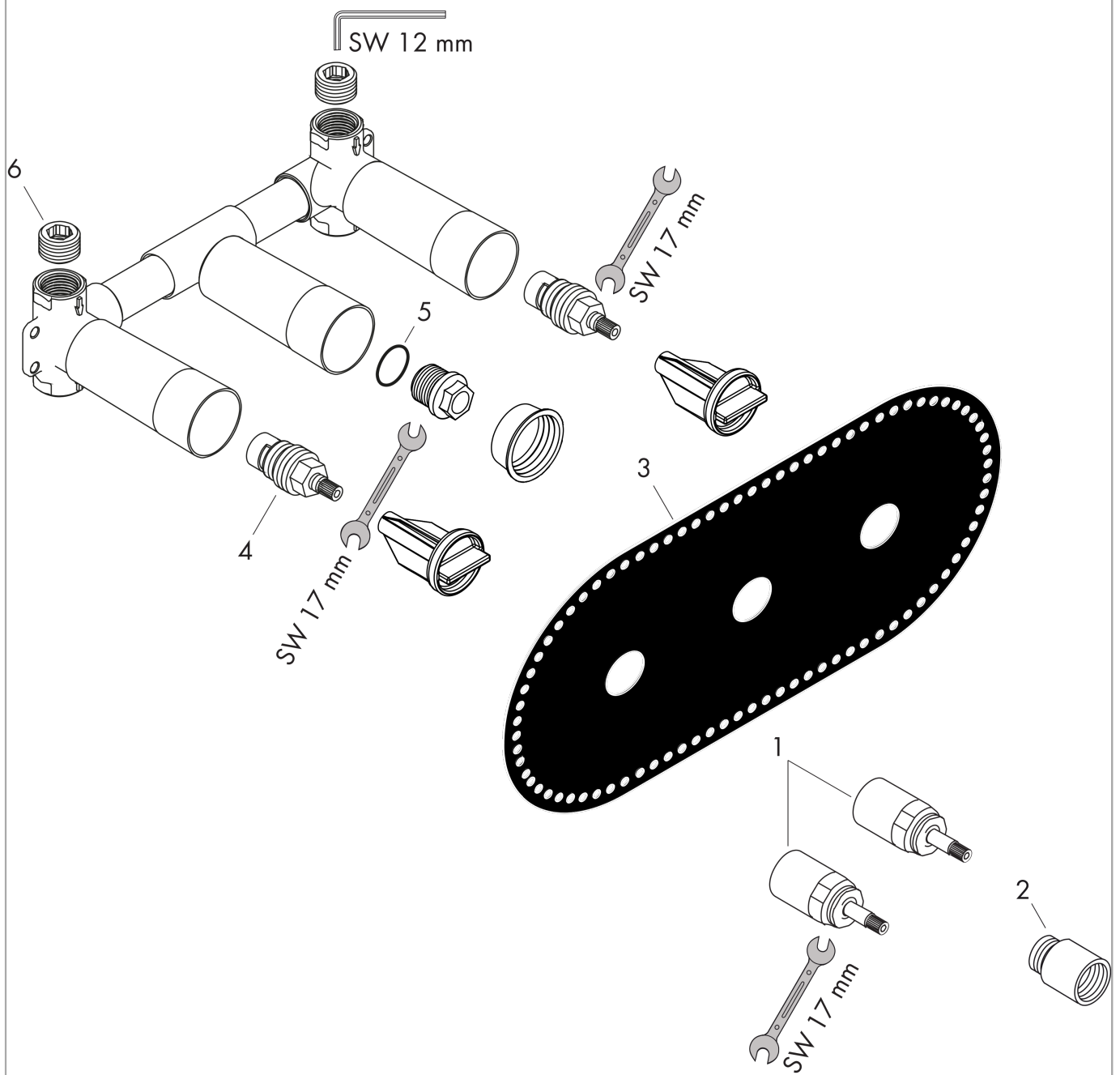


Basic set for 3-hole basin mixer for concealed installation wall-mounted
Surfaces: n.a. Article Number: 10303180



Exploded Drawing

Year of production: >04/01



Basic set for 3-hole basin mixer for concealed installation wall-mounted

Surfaces: n.a. Article Number: **10303180**



Spare part list

Year of production: >04/01

Pos.	Description	Article Number	PC	PU
1	extension 25 mm	96259000	0	1
2	extension 25 mm	95413000	0	1
3	sealing foil	96383000	0	1
4	shut off unit right closing	94009000	0	1
5	O-ring 18x2	98181000	0	1
6	plug	97998000	0	1